

# BAC OÙ CRÈVE

PIANO

LEANDRO GUFFANTI

♩. = 112 **A** Fm Fm/Eb

3

9 Db $\Delta$  C7(b9) Fm

15 Fm/Eb Db $\Delta$  C7(b9)

**B**

21 Abm Abm/F# E $\Delta$  Eb7(b9)

29 Abm Abm/F# E $\Delta$  Eb7(b9)

36 B $\Delta$  **C1** Bb $\circ$  Abm F#7

43 E $\Delta$  1. Abm F# Fm Eb Db $\Delta$

50 2. C7(b9) Abm **C2** F# Fm Eb $\Delta$

57 Db $\Delta$  F#/E Ab/F# B $\Delta$

64

ON SOLOS JUMP TO F

**D** Gm Gm/F Eb $\Delta$  D7(b9)

Abm Abm/F# E $\Delta$

Eb7(b9) Abm

Abm/F# E $\Delta$  Eb7(b9)

**E** B $\Delta$  Bb $\circ$  Abm F#7 E $\Delta$

Abm F# Fm Eb $\Delta$  Db $\Delta$

F#/E Ab/F# B $\Delta$

**F** 4 2

Bbm7 Bbm/Ab F#

*fff*

F#/F

Ebm

DbΔ

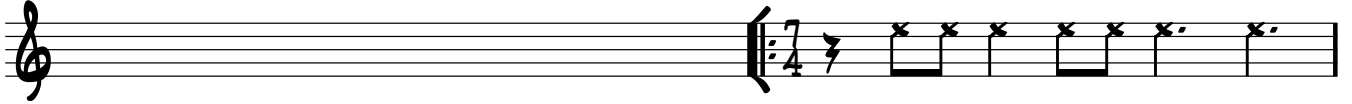
C7(b13/9)

3



SOLOS ON A, B & C1 TO END ON C2 TO F

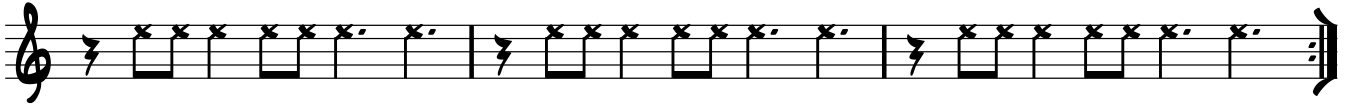
AbΔ/F



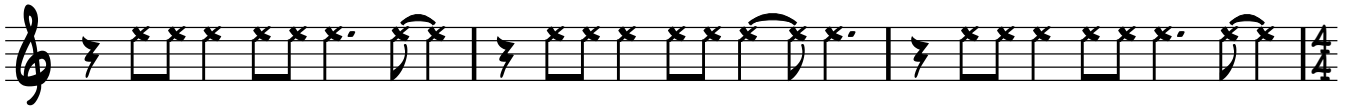
BbΔ/F

Cm(maj9)/F

DbΔ/F



GbΔ/F



Bbm7

Bbm/Ab

F#

F#/F

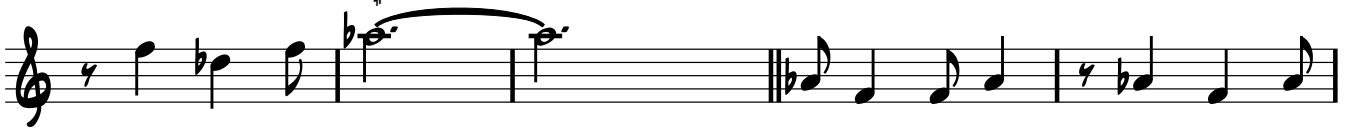
Ebm



DbΔ

C7(b13/9)

Fm



Fm/Eb

DbΔ

C7(b9)



Abm

Abm/F#

EΔ

Eb7(b9)



BΔ

Bb°

Abm

F#7



EΔ

Abm

F#

Fm

EbΔ



4

Musical notation for a four-measure phrase in G major. The notation is written on a single treble clef staff. The first measure contains a quarter rest followed by a quarter note G4, a quarter note B4, and a quarter note D5. The second measure contains a dotted quarter note G4, a dotted quarter note B4, and a dotted quarter note D5. The third measure contains a quarter rest followed by a quarter note G4, a quarter note B4, and a quarter note D5. The fourth measure contains a dotted quarter note G4, a dotted quarter note B4, and a dotted quarter note D5. Above the staff, the chords  $D^b\Delta$ ,  $F^\#/E$ ,  $A^b/F^\#$ , and  $B\Delta$  are indicated above the first, second, third, and fourth measures, respectively. The piece concludes with a double bar line.